



**ETON**

since 2019





## Product Catagories

- Engine Lubricant
- Break Fluid
- Automatic Transmission Fluid
- Hydraulic Oil
- Engine Anti Freeze (Coolent)





# Liquid Gold For Your Engine



**SAE 20W-50 CH4**

**Description**

ETON SAE 20W-50 CH4 is a multi grade semi synthetic diesel engine oil for heavy-duty diesel engines. Formulated using nano additive technology and high-quality virgin base oils to meet current specifications and provide complete protection for all new and old generation vehicles.

**Features**

- Helps remove sludge from dirty engines
- High viscosity to reduce leaks in older, high-mileage engines
- Designed to provide consistent engine performance
- Features High Resistance To Foaming And Corrosion
- Provides superior low to high-temperature performance



**TECHNICAL CHARACTERISTICS**

TESTS	METHOD	SAE 20W50
	Appearance	Visual
Colour	ASTM-1500	Golden L3
Water	HOT PLATE	Nil
Sp.Gravity @15 deg c	D 1298	0.883
Viscosity @ 100 deg C,cSt	D445	19-20
Viscosity @ 40 deg C, cSt	D445	222
Viscosity Index	0	98-105
Flash Point, COC, def C	D92	240
TBN, mgm KOH / gm	D2896	>7
Pour Point deg C	D97	<-6
Foam Seq.I/II/III,ml	D 892	0/0/0

**SAE 15W-40 CI4**

**Description**

ETON SAE 15W-40 CI4 is a Premium multi grade semi synthetic diesel engine oil for heavy-duty diesel engines. Formulated using europe standard additives and technology , high-quality virgin base oils blend to meet current specifications and provide complete protection for all new and old generation vehicles.API CI-4 is a higher quality oil than the previous diesel oil categories

**Features**

- Low emmision
- Helps remove sludge from dirty engines
- High viscosity to reduce leaks in older, high-mileage engines
- Designed to provide consistent engine performance
- Features High Resistance To Foaming And Corrosion
- Provides superior low to high-temperature performance



**TECHNICAL CHARACTERISTICS**

TESTS	METHOD	SAR 15W-40
	Appearance	Visual
Colour	ASTM-1500	Golden L3
Water	HOT PLATE	Nil
Sp.Gravity @15 dg c	D 1298	0.876
Viscosity @ 100 deg C,cSt	D445	14-15
Viscosity @ 40 deg C, cSt	D445	110
Viscosity Index	0	137
Flash Point, COC, def C	D92	236
TBN, mgm KOH / gm	D2896	>8
Pour Point deg C	D97	<-30
Foam Seq.I/II/III,ml	D 892	0/0/0

**API SN 5W-30**

**Description**

Eton Motor Oils are designed with high-quality synthetic base stocks and top-of-the-line additive technology to provide maximum protection for today's modern engines and are formulated to meet the common requirements for U.S., European, and Japanese cars and light trucks with gasoline engines. Eton Full Synthetic 5W-30 Motor Oil Recommended for use in cars and light trucks with gasoline and gasoline turbocharged engines where API SN and all prior specifications are required.

**Features**

- Most advanced chassis formula for high performance engines
- Provide higher levels of cleaning and protection
- Helps to improve and retain fuel economy
- Protects vehicle emission system and turbo charge components
- Proven performance across a variety of driving conditions
- And temperatures



**TECHNICAL CHARACTERISTICS**

TESTS	Product	SAE 20W30 API SN'
	METHOD	
Appearance	Visual	C/B
Colour	ASTM-1500	Golden L2
Water	HOT PLATE	Nil
Sp.Gravity @15 dg c	D 1298	0.865
Viscosity @ 100 deg C,cSt	D445	11-12
Viscosity @ 40 deg C, cSt	D445	80
Viscosity Index	0	>155
Flash Point, COC, def C	D92	220
TBN, mgm KOH / gm	D2896	>8
Pour Point deg C	D97	<-30
Foam Seq.I/II/III,ml	D 892	0/0/0

**API SN 5W-40**

**Description**

Best for modern gasoline and diesel engines with and without exhaust gas turbochargers. For the protection and value retention of the engine during long intervals between oil changes and with high loads. Low-viscosity high-tech low-friction motor oil with high shear stability. Combined with innovative additive technology and the special additives. Reliably prevents the formation of deposits, reduces frictional losses in the engine and provides optimum protection against wear. The results are savings in fuel and an extended service life for the engine.

**Features**

- Helps remove sludge from dirty engines
- High viscosity to reduce leaks in older, high-mileage engines
- Designed to provide consistent engine performance
- Features High Resistance To Foaming And Corrosion
- Provides superior low to high-temperature performance



**TECHNICAL CHARACTERISTICS**

TESTS	Product	SAE 5W40 API SN
	METHOD	
Appearance	Visual	C/B
Colour	ASTM-1500	Golden L2
Water	HOT PLATE	Nil
Sp.Gravity @15 deg c	D 1298	0.865
Viscosity @ 100 deg C,cSt	D445	14-15
Viscosity @ 40 deg C, cSt	D445	103
Viscosity Index	0	>140
Flash Point, COC, def C	D92	220
TBN, mgm KOH / gm	D2896	>8
Pour Point deg C	D97	<-24
Foam Seq.I/II/III,ml	D 892	0/0/0

**API SN 20W-50**

**Description**

Eton 20W-50 Semi Synthetic car lubricant is suitable for use in automotive gasoline engines where the manufacturer recommends an API SL or earlier specification 20W-50 lubricant.

**Features**

- Keeps the engine clean
- The car oil that provides protection against engine sludge for the best engine performance.
- Its formulation minimizes the formation of deposits
- Helps minimize oil consumption.
- Provides superior low to high-temperature performance



**TECHNICAL CHARACTERISTICS**

TESTS	Product	SAE 20W50 API SN
	METHOD	
Appearance	Visual	C/B
Colour	ASTM-1500	Golden L2
Water	HOT PLATE	Nil
Sp.Gravity @15 dg c	D 1298	0.883
Viscosity @ 100 deg C,cSt	D445	19-20
Viscosity @ 40 deg C, cSt	D445	172
Viscosity Index	0	98-105
Flash Point, COC, def C	D92	240
TBN, mgm KOH / gm	D2896	>7
Pour Point deg C	D97	<-6
Foam Seq.I/II/III,ml	D 892	0/0/0



**API SN 10W-40**

**Description**

A premium performance fully synthetic oil for gasoline car engines.its thermal stability means it lasts longer ,resulting in longer oil-change Periods.

**Features**

- High fluidity and low viscosity
- Helps remove sludge from dirty engines
- Designed to provide consistent engine performance
- Features High Resistance To Foaming And Corrosion
- Provides superior low to high-temperature performance



**TECHNICAL CHARACTERISTICS**

TESTS	Product	SAE 10W40 API SN
	METHOD	
Appearance	Visual	C/B
Colour	ASTM-1500	Golden L2
Water	HOT PLATE	Nil
Sp.Gravity @15 dg c	D 1298	0.865
Viscosity @ 100 deg C,cSt	D445	14-15
Viscosity @ 40 deg C, cSt	D445	109
Viscosity Index	0	>140
Flash Point, COC, def C	D92	220
TBN, mgm KOH / gm	D2896	>8
Pour Point deg C	D97	<-30
Foam Seq.I/II/III,ml	D 892	0/0/0



## Eton Brake Fluid

Synthetic brake fluid based on polyglycols and esters, containing corrosion and oxidation inhibitors. Designed for hydraulic systems of all traditional brake devices and clutches.

- DOT 3
- DOT 4





## Hydraulic oil

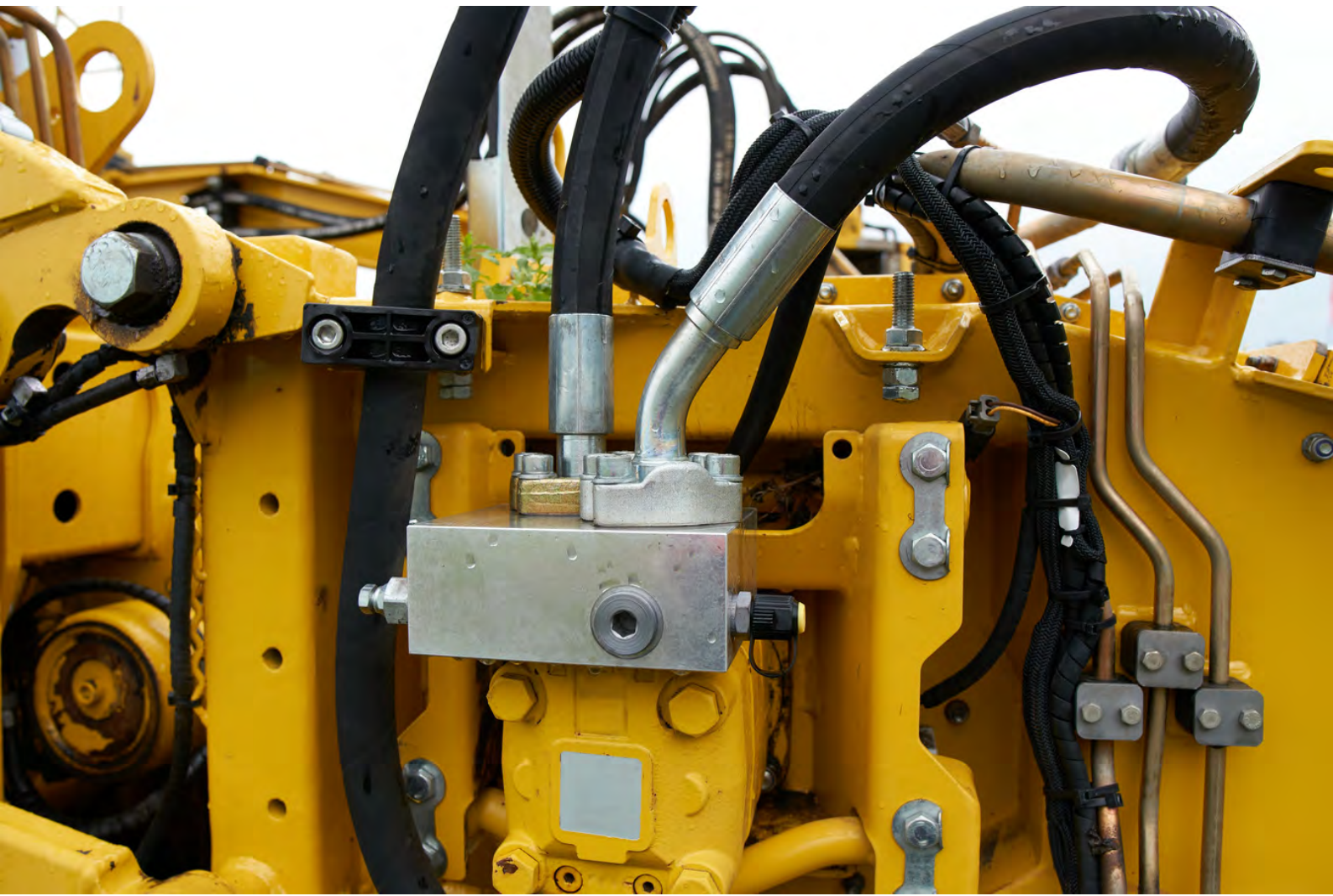
- Hydraulic oil ISO 32
- Hydraulic oil ISO 46
- Hydraulic oil ISO 68
- Hydraulic oil ISO 100

## ATF

- DEX III

## Gear Oil

- 140 GL4
- 140 GL5
- 85W90 GL4
- 85w90 GL5





**ETON**

## Contact Us:

### WhatsApp:

WA: +971-50 553 5875

### Office:

Tel: +971-4441-3886

Fax: +971-4441-4235

### Email:

[info@almozanabgeneraltrading.com](mailto:info@almozanabgeneraltrading.com)

### Address:

# 1107, Shoba Ivory 2,  
Building, Business Bay,  
Dubai – UAE.

